

**SPECIFICATIONS**

Rated(额定参数): 300V,16A  
 Dielectric strength(抗电强度): AC1250V/1 Minute  
 Insulation Resistance(绝缘电阻):1000MΩ Min  
 Contact Resistance(接触电阻):20mΩ Max  
 Screw Torque(扭矩): 0.2Nm (1.7Lb.in)  
 Wire Range(线径):1.8~24AWG  
 Strip length(剥线长度):5~6mm  
 Temp. range(操作温度):-40℃~+105℃  
 MAX Soldering(瞬时温度):+250℃,5s

Housing Material(塑件): PA66 (UL94 V-0)  
 Contact(端子): Brass, Tin plating(黄铜镀锡)  
 Wire protector(弹片): Bronze(磷铜), Ni plating(镍鍍)  
 Screw (螺丝): M2.0, Steel, Zinc plating(钢,镀锌)

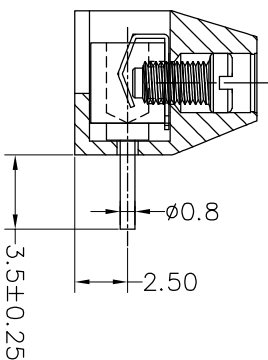
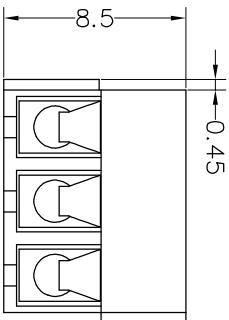
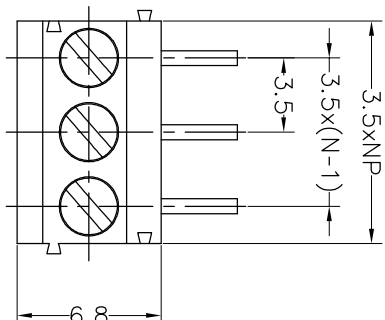
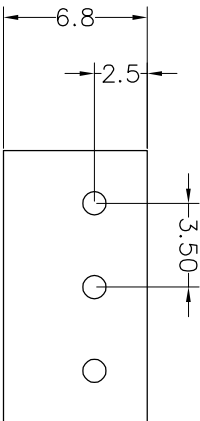
PITCH RANGE		NOMINAL DIMENSION RANGE					
IN MM		IN MM		IN MM		IN MM	
OVER	TO	OVER	TO	OVER	TO	OVER	TO
6	10	10	24	30	60	100	150
±0.10	±0.15	±0.25	±0.30	±0.30	±0.50	±0.70	±1.00

**Ordering Information**

**JL 350R - 350 XX G X 1**

Pitch 350=3.5PH  
 No. of pins 2P,3P,4P~24P  
 Housing Color  
 B=Black  
 G=Green  
 U=Blue  
 R=Red  
 W=White  
 Y=Yellow  
 O=Orange  
 E=Grey  
 Packing  
 O=Pe bag  
 T=Tube  
 A=Tray

Recommended P.C.B Layout(Top Side)



REV	DATE	MODIFICATION DESCRIPTION	CHANGE	DIM	TOL	APPROVE	SCALE	FIT	PROU.	PART NO.	TITLE:
A0	2017.01.04	NEW DRAWING		Angle	±3°	CHECK	A4	1/1		JL350R-350XXGX1	3.50mm Terminal Blocks Female
1			CHANGE								90° DIP

**JIN** 深圳市锦凌电子有限公司  
 SHENZHEN JINLING ELECTRONIC CO.,LTD  
 Tel: 86-755-2997-5806/5802 Fax: 86-755-2997-5992